



JCC JAPANESE BIFURCATION CLUB

症例集

LIVE DEMONSTRATION 2022

Case-1 80's male

Target Lesion: LMT - LAD

Diagnosis: AP, post TAVI, PAD

Prior intervention:

Sep. 2018 TAVI (SAPIEN3 26mm)

Coronary risk factor:

HT, Dyslipidemia

eGFR: 7.7 (CRF on HD)

SYNTAX Score: 20

Final CAG findings: Nov. 2022

CAG: LMT-LAD diffuse 75%,

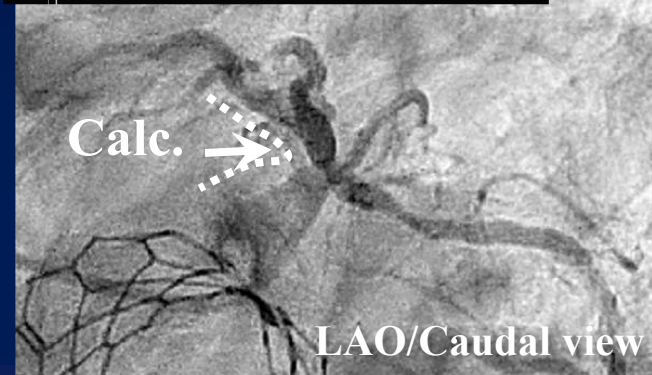
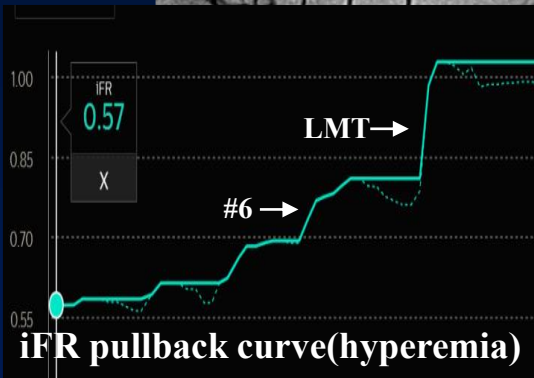
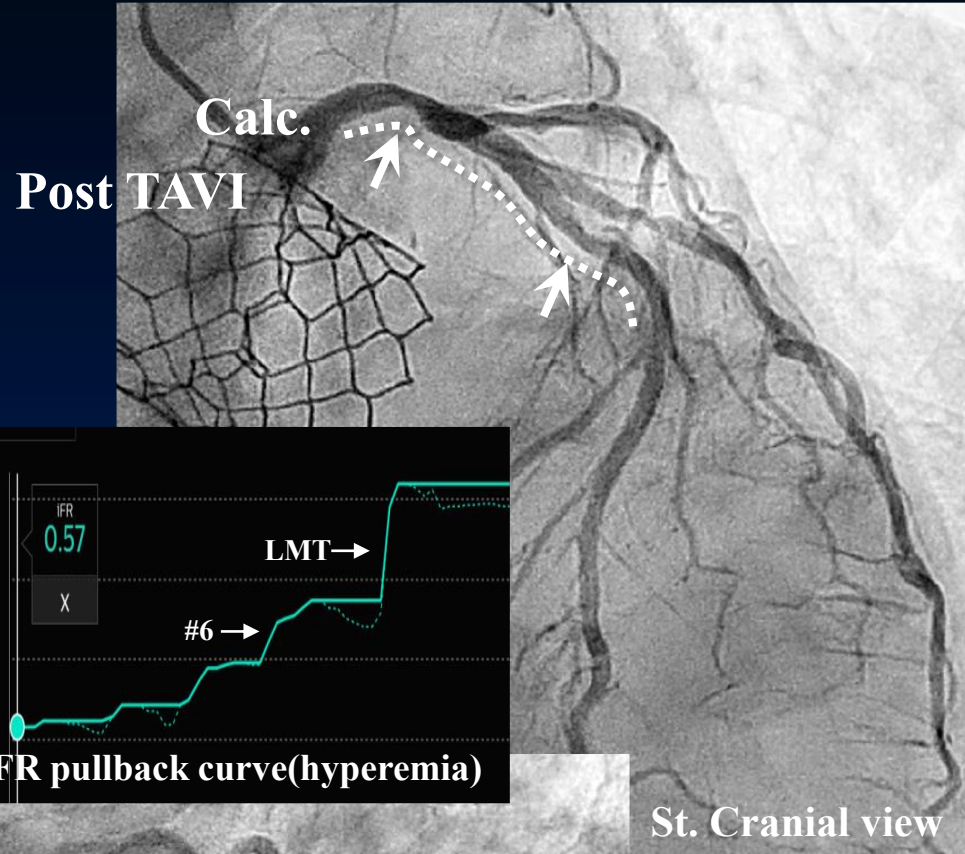
ost. RCA 50-75%,

PD branch 90%

FFR: **LMT-LAD : 0.73 (iFR: 0.68)**

RCA : 0.84 (iFR: 0.92)

LV EF(UCG): 61.3%



Case-1
CT

LMT

#6jp

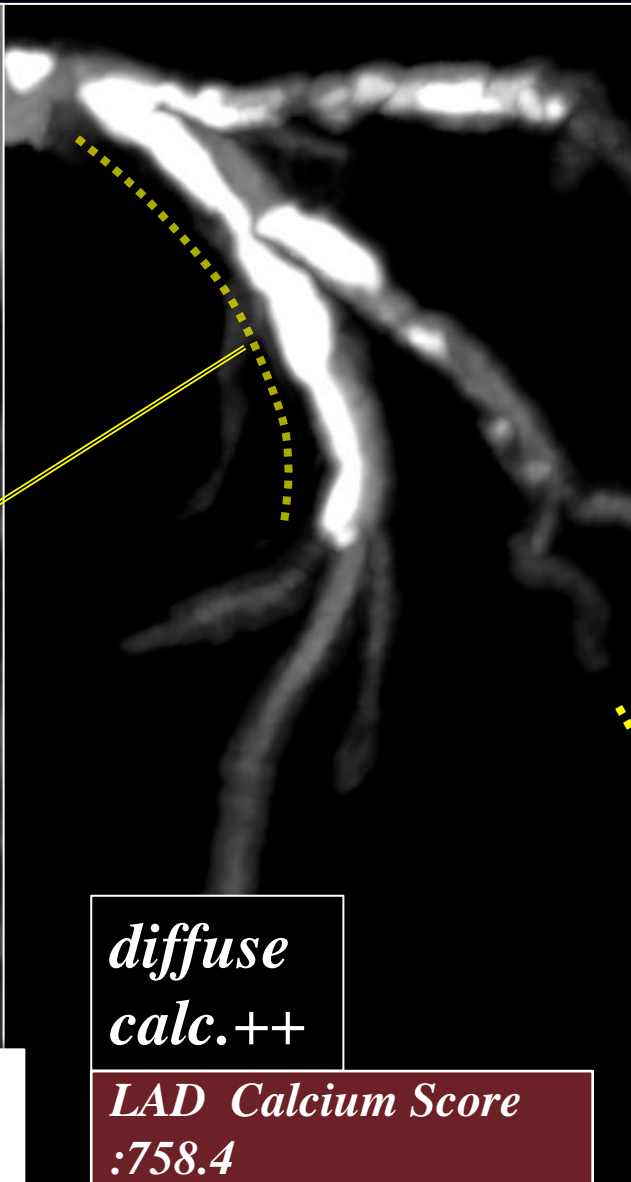
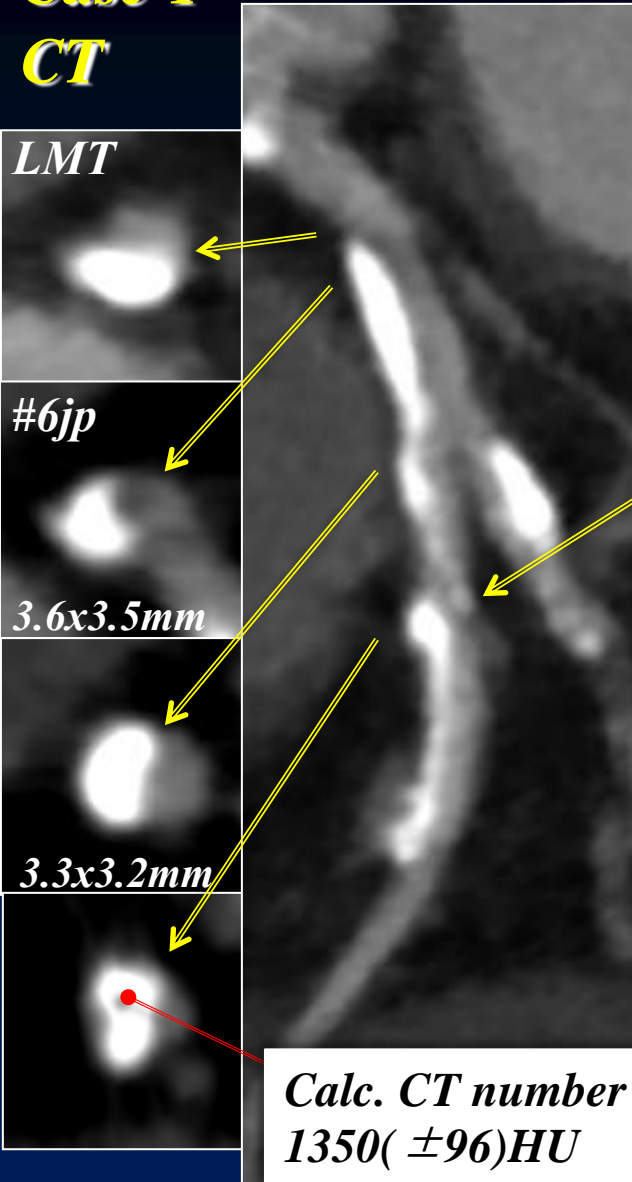
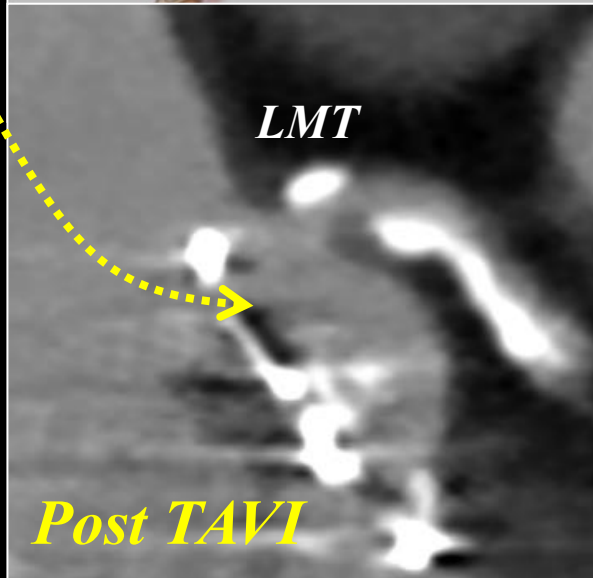
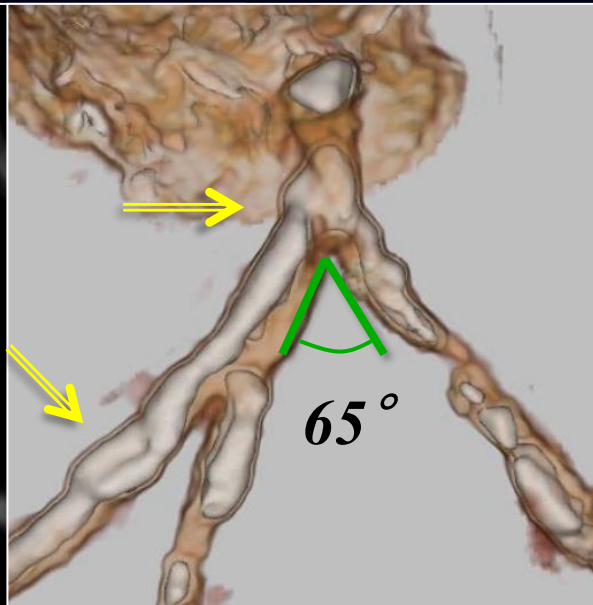
3.6x3.5mm

3.3x3.2mm

Calc. CT number
1350(±96)HU

diffuse
calc.++

LAD Calcium Score
:758.4



Case-2 70's male

Target Lesion: LCX

Diagnosis: AP, OMI, CKD, post CABG

Prior intervention:

May 2020 CABG
(LITA-LAD, SVG-PD branch,
SVG-LCX)

Coronary risk factor:

DM, HT, Dyslipidemia, current smoking

eGFR: 47.2

SYNTAX Score: 11

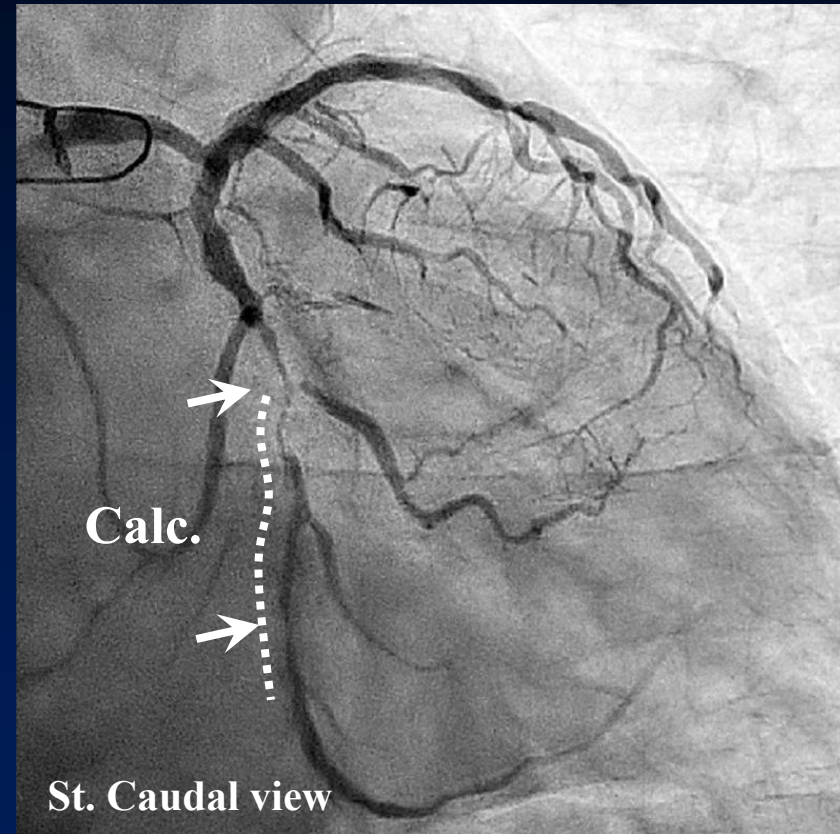
Final CAG findings: Nov. 2022

CAG: **mild LCX 90%, OM 90%**,
mid. LAD 100%, diago 90%,
prox. RCA 90%, mid. RCA 100%

Graft: **SVG-LCX: occluded**,
LITA-LAD: patent
SVG-PD branch: patent

LV EF(UCG): 43%

MRI: lateral, inferior, septal: ischemia(+)

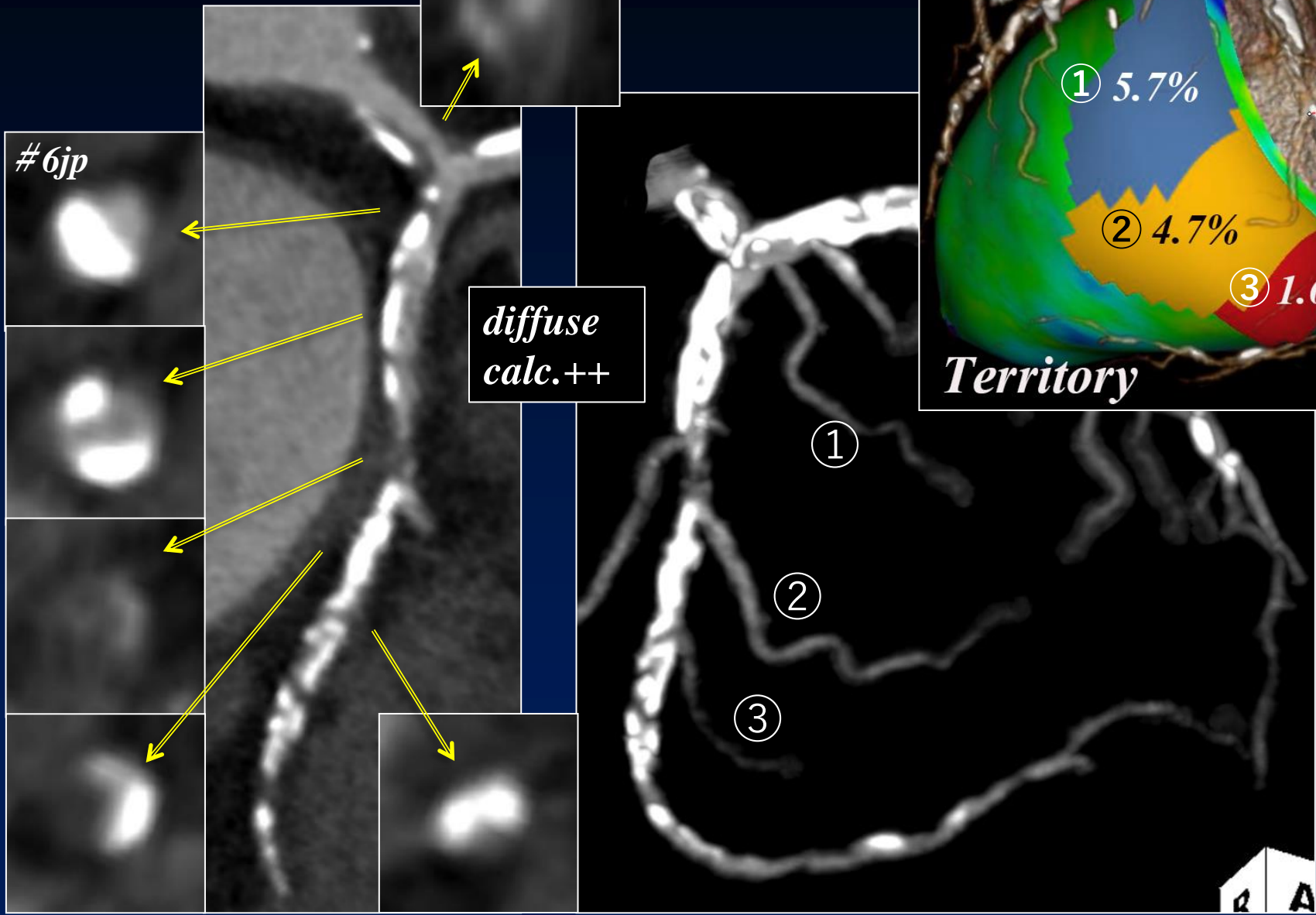
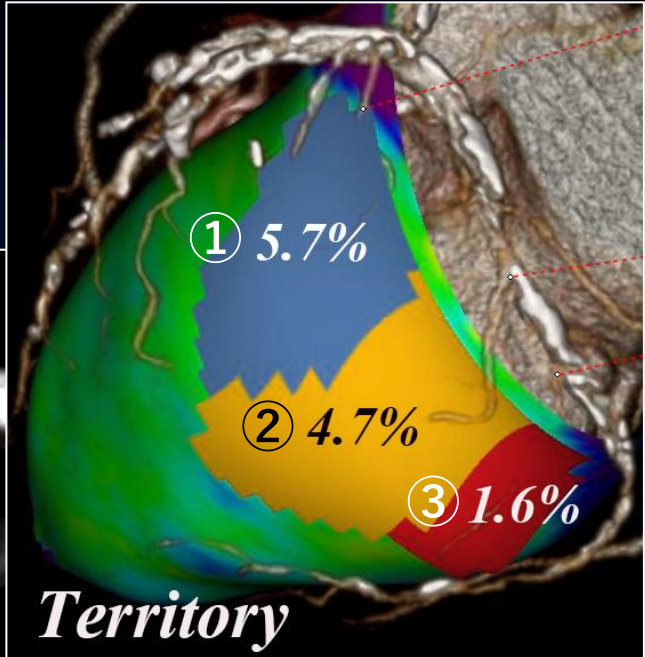


Case-2 CT

LMT 5.6x5.7mm

#6jp

diffuse calc.++



R A

Case-3 70's male

Target Lesion: LAD

Diagnosis: AP, PAD, mild AS (V: 2.1m/s)

Prior intervention:

- Apr. 2009 PCI Stent, (prox. RCA)
- Aug. 2014 PCI Stent, (dis. LCX)
- Apr. 2015 PCI Stent, (mid. RCA)
- Jun. 2015 PCI Stent, (dis. RCA)
- Jun. 2020 endarterectomy, (Rt. CFA)

Coronary risk factor: HT

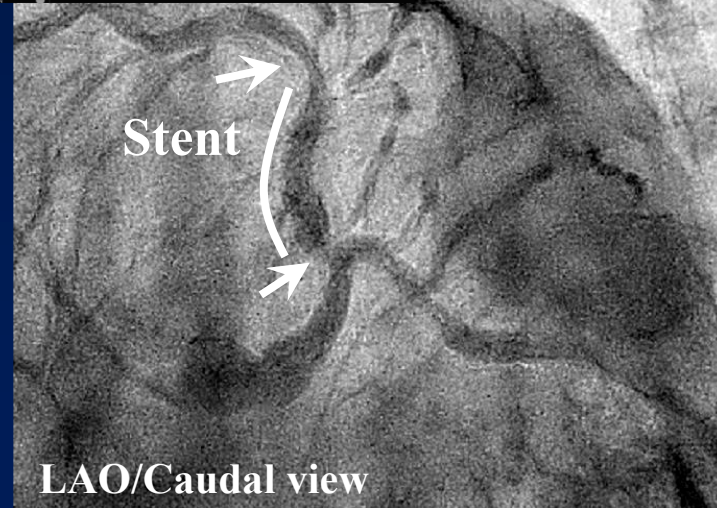
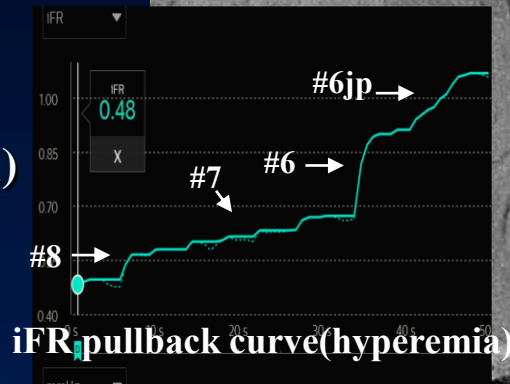
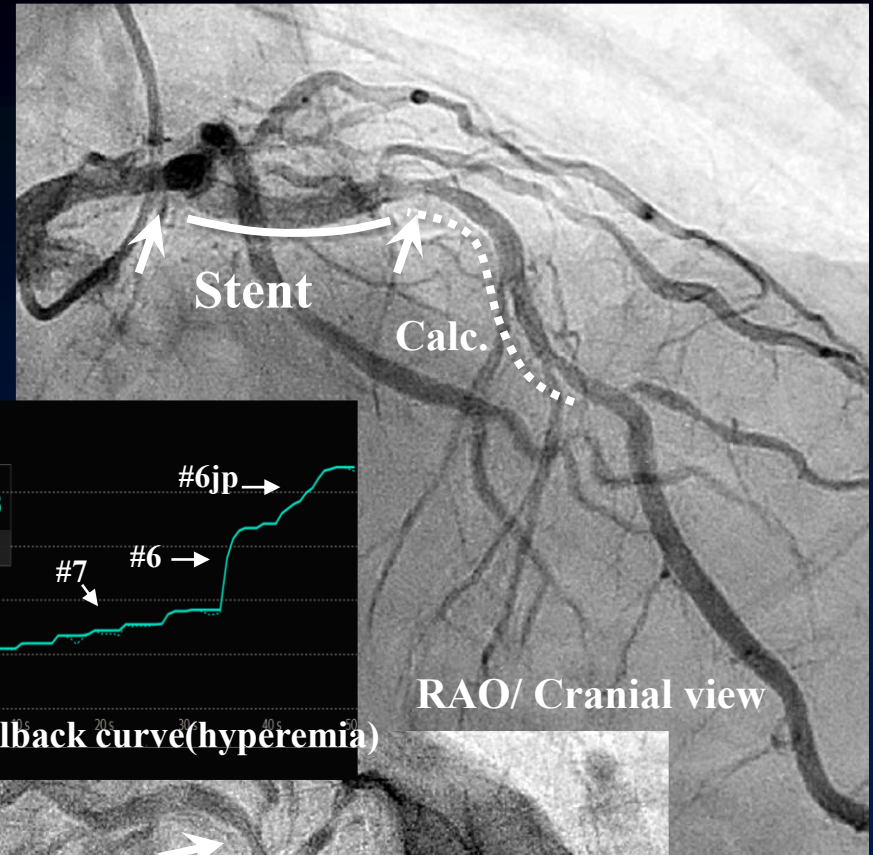
eGFR: 93.1

SYNTAX Score: 25

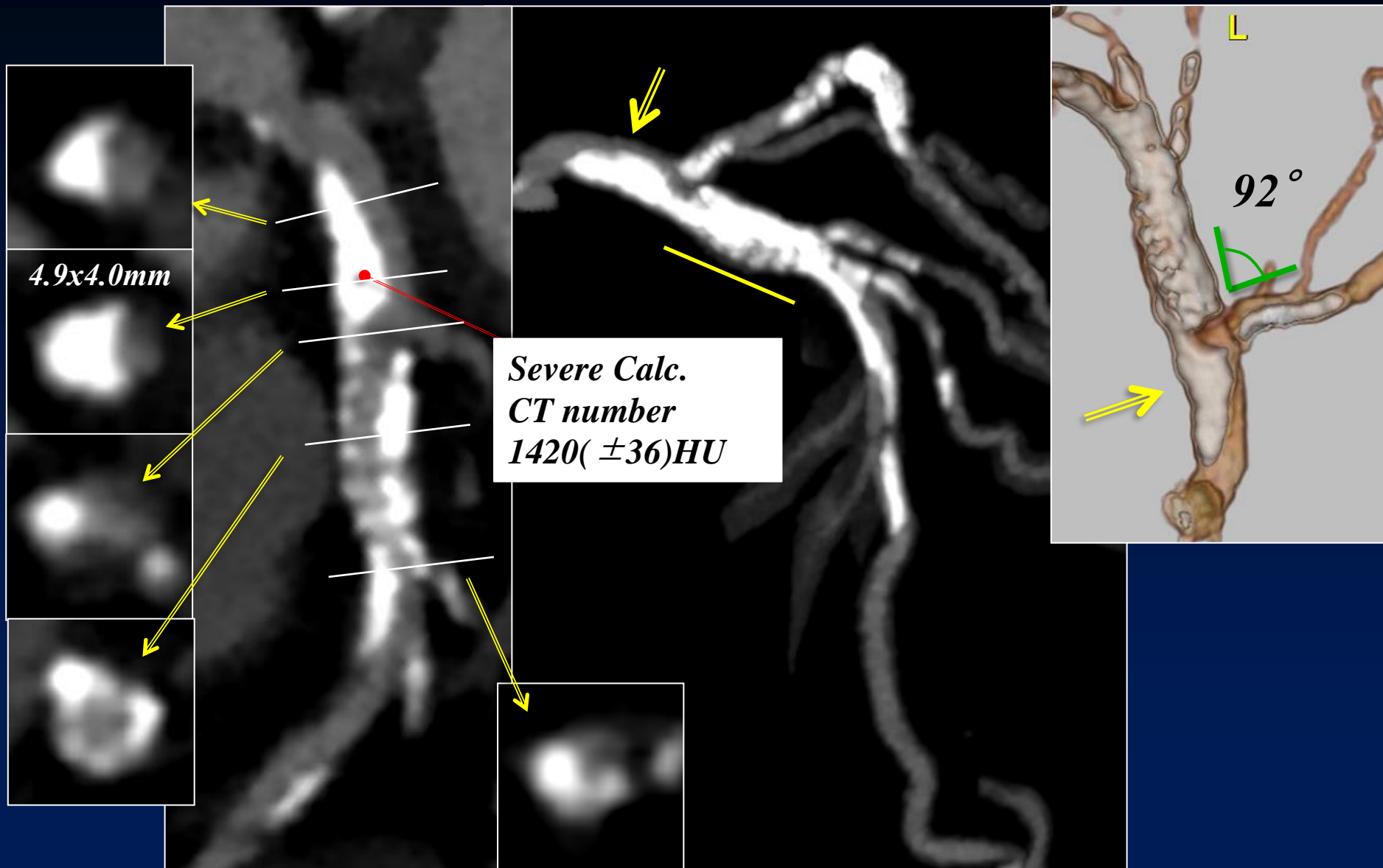
Final CAG findings: Nov. 2022

- CAG: Ost. LAD 75%, prox. LAD 75%
diagonal 90%, dis. LAD 90%,
mid. RCA 75%,
AV branch 90%, PD branch 90%
- FFR:** LMT-LAD: 0.70 (iFR: 0.68)
RCA: 0.88 (iFR: 0.98)

LV EF(UCG): 61.0%



Case-3 CT



Case-4 80's male

Target Lesion: Ost. LAD

Diagnosis: AP, post TAVI, CKD

Prior intervention:

Jan. 2015 BAV

Feb. 2016 TAVI (CoreValve 29mm)

Feb. 2016 PMI

Nov. 2020 PCI Stent, (prox. LAD)
PCI Stent, (OM)

Coronary risk factor:

HT

eGFR: 43.4

SYNTAX Score: 17

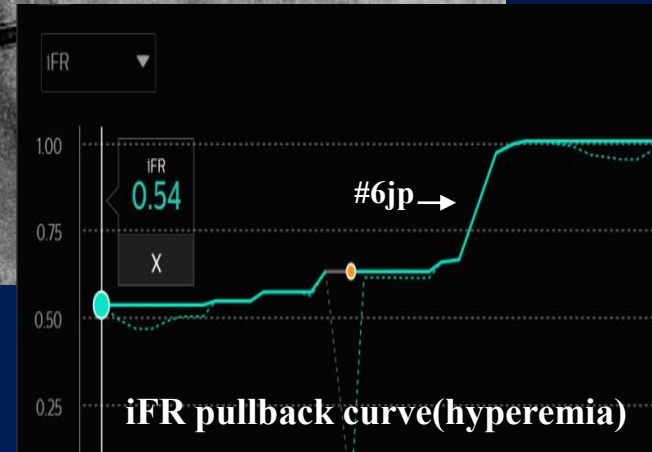
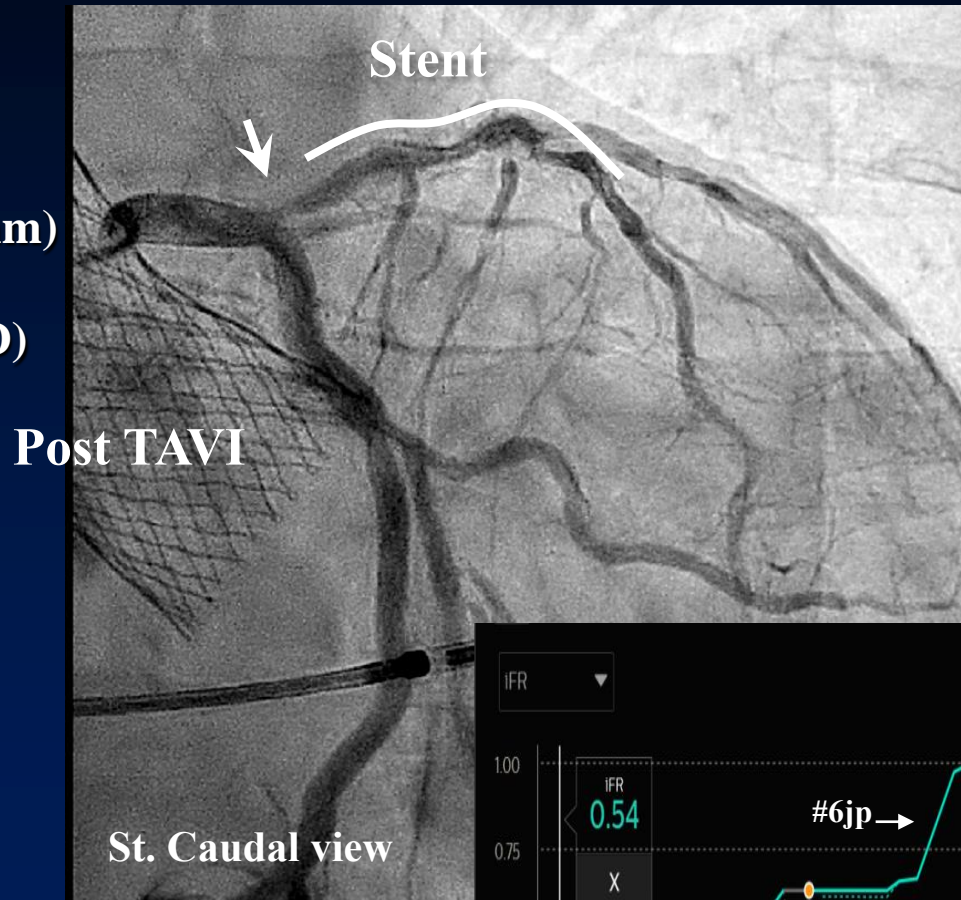
Final CAG findings: Nov. 2022

CAG: Ost. LAD 75%,

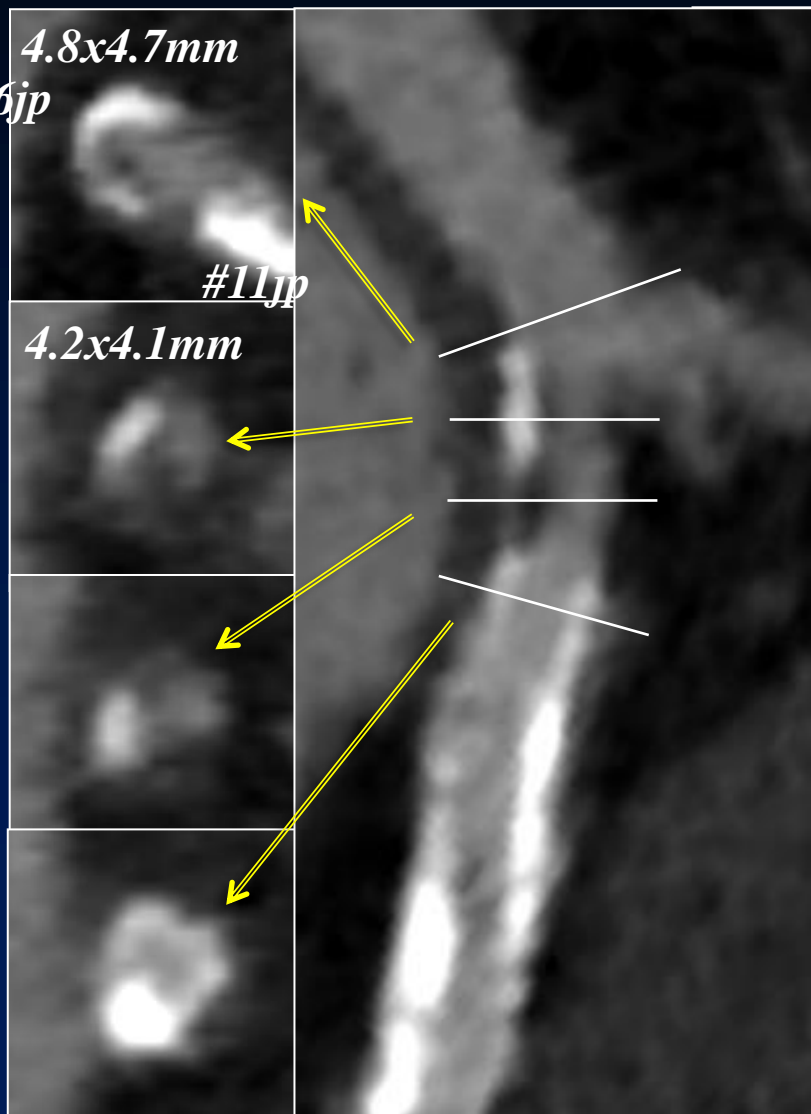
diago. 75%

FFR: LAD: 0.69 (iFR: 0.76)

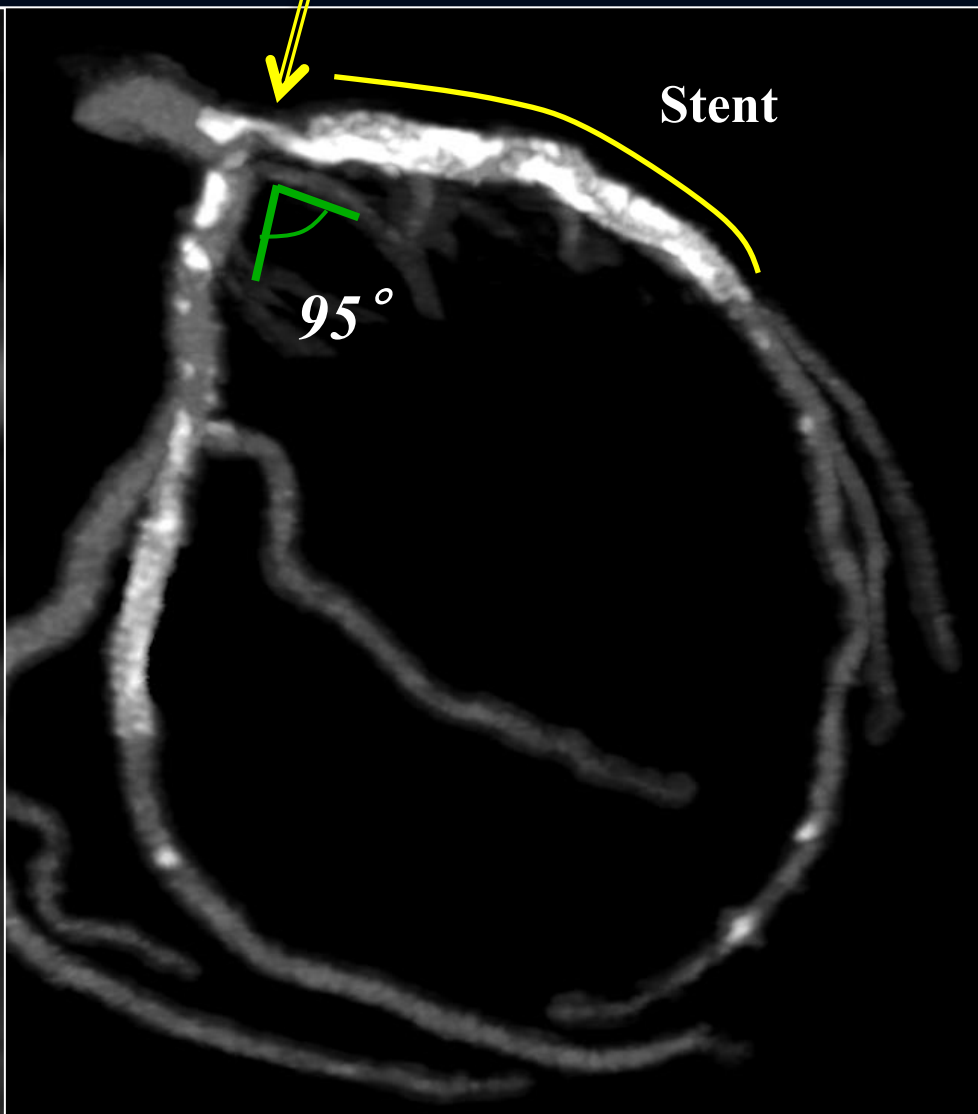
LV EF(UCG): 49.2%



Case-4 CT



Calc.+



Case-5 80's male

Target Lesion: Ost. LCX

Diagnosis: AP, Paf, post LAAC

Prior intervention:

May 2005 PCI Stent, (prox. LAD)

Jan. 2009 PAF Ablation

Sep. 2015 PAF Ablation

Mar.2017 PAF Ablation

May 2022 LAAC

Coronary risk factor:

HT, Dyslipidemia

eGFR: 47.2

SYNTAX Score: 8

CHA₂DS₂VASC Score: 5

HASBLED Score: 4

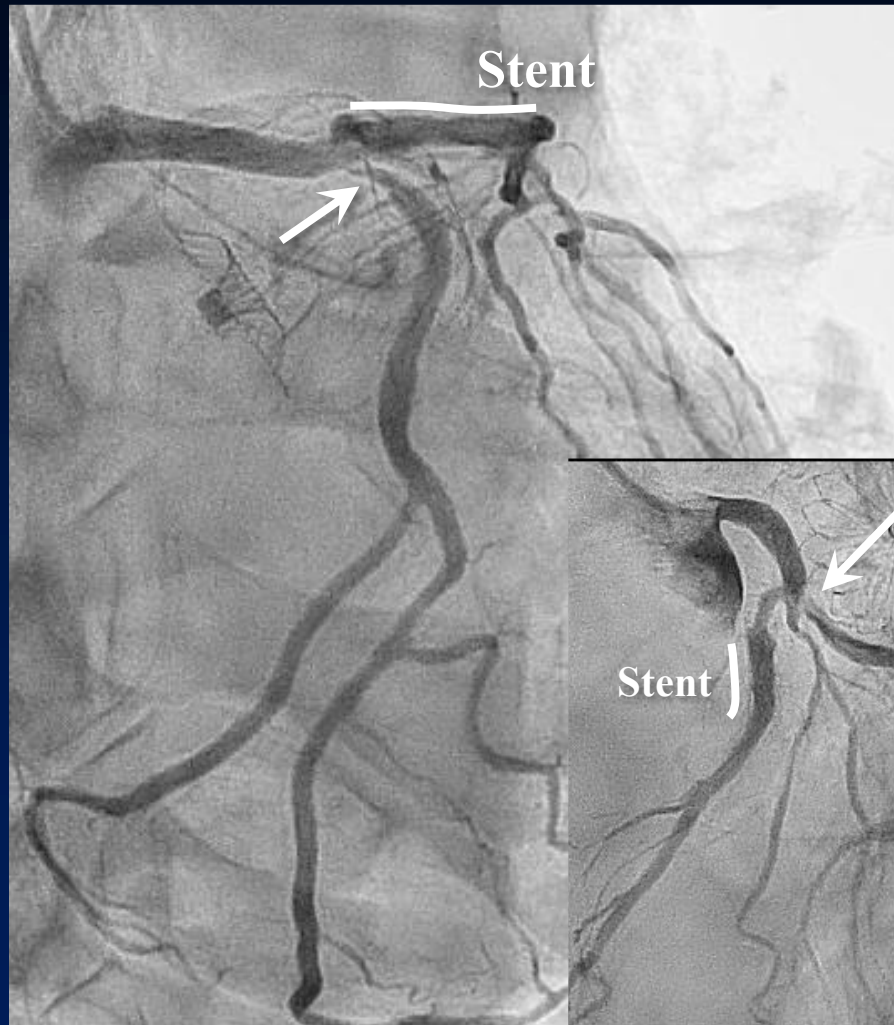
Final CAG findings: Nov. 2022

CAG: Ost. LCX 90%,

HL 75%

MRI: lateral ischemia(+)

LV EF(UCG): 60%



Case-5 CT

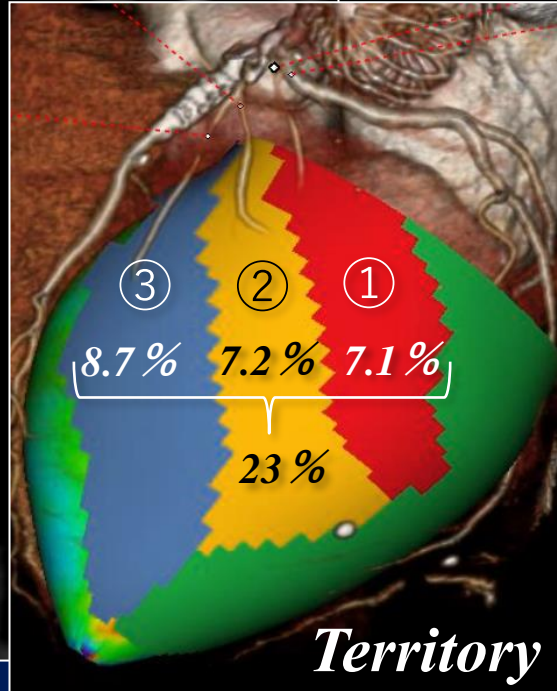
LMT

#11jp

Calc.+

2.4x2.3mm

2.5x2.3mm



Territory