

JCC

JAPANESE  
BIFURCATION  
CLUB

症例集

LIVE DEMONSTRATION 2021



## Case-1 70's male

### Target Lesion: **LMT Bifurcation**

**Diagnosis:** AP, OMI, COPD, CIA aneurysm

**Prior intervention:**

Feb. 2021 Stent (prox.– dis. RCA)

Jul. 2021 Stent (prox. RCA ISR)  
, other hospital

Aug. 2021 Rota + Stent (mid. LAD)  
OAS (ost. diagonal)

**Coronary risk factor:**

HT, Current smoking

**eGFR:** 93.7

**SYNTAX Score:** 36.5

**Final CAG findings:** Aug. 2021

CAG: LMT-prox. LAD 75-90%,

ost. LCX 90%,

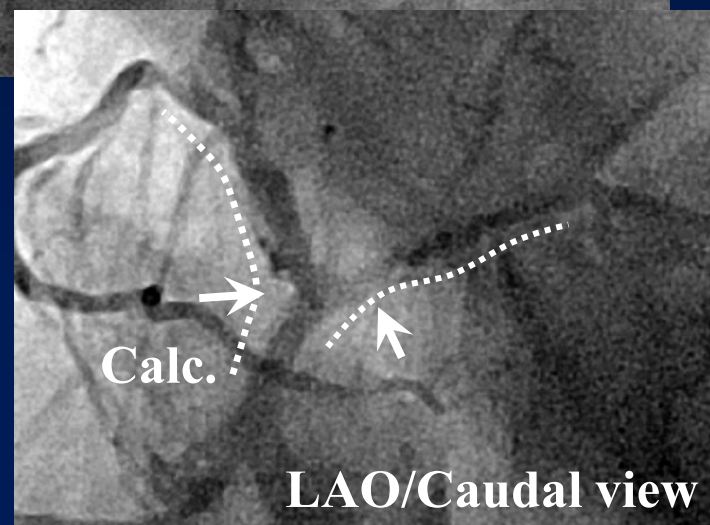
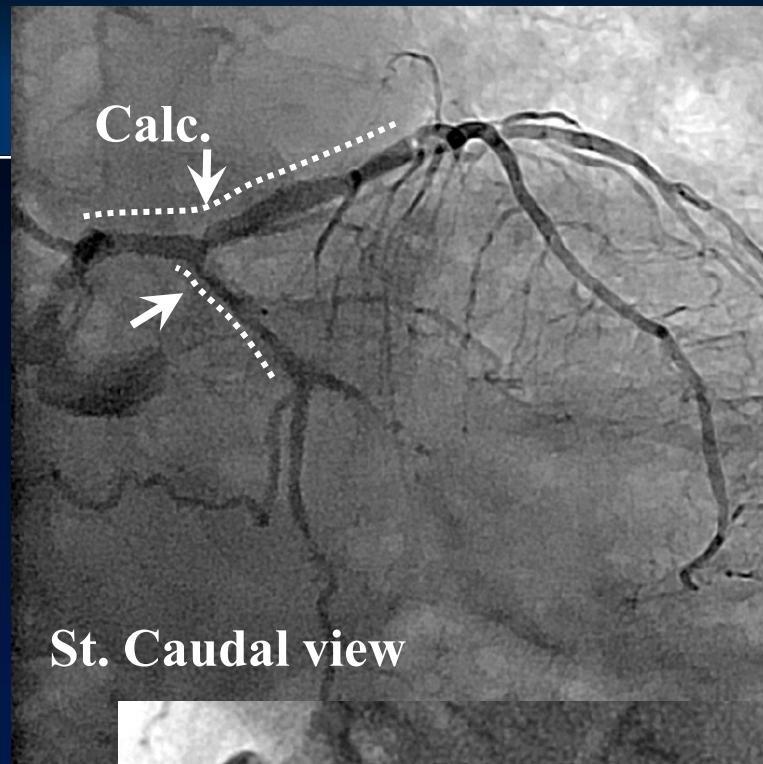
mid. LAD 90%→0% (Stent),

diago. 90% →0% (OAS)

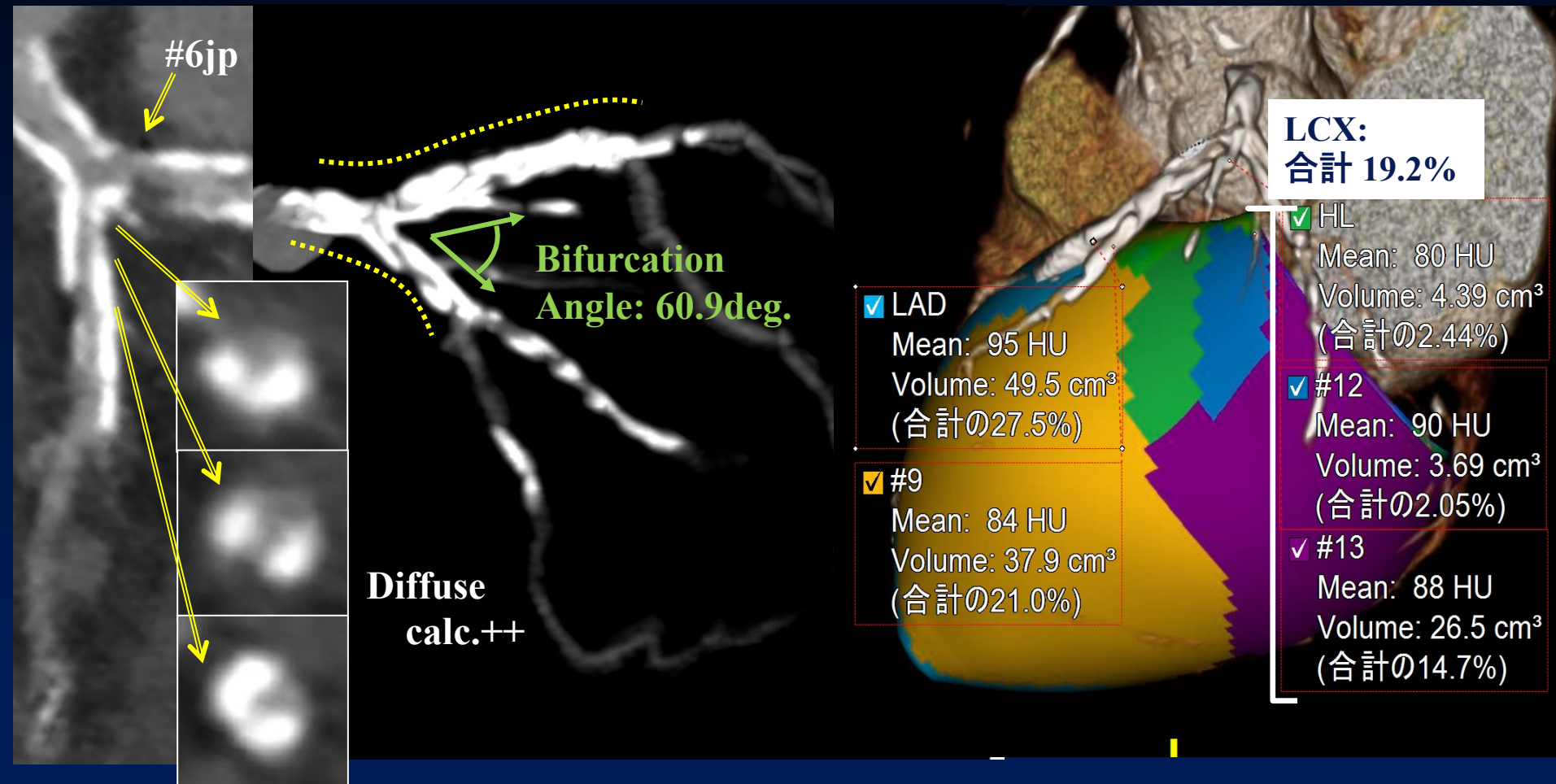
OM 100%, dis. LCX 75%, AV branch 75%

FFR: LCX : 0.65 (iFR:0.68)

**LV EF (UCG):** 51%



# Case-1 CT



LCX CPR

## Case-2 70's male

Target Lesion:

**LMT & LAD diffuse & Bifurcation**

**Diagnosis:** AP, OMI

**Prior intervention:**

Jul. 2021 Stent (PL & PD branch)  
DCB (AV branch)

**Coronary risk factor:**

DM, HT

**eGFR:** 72.9

**SYNTAX Score:** 28

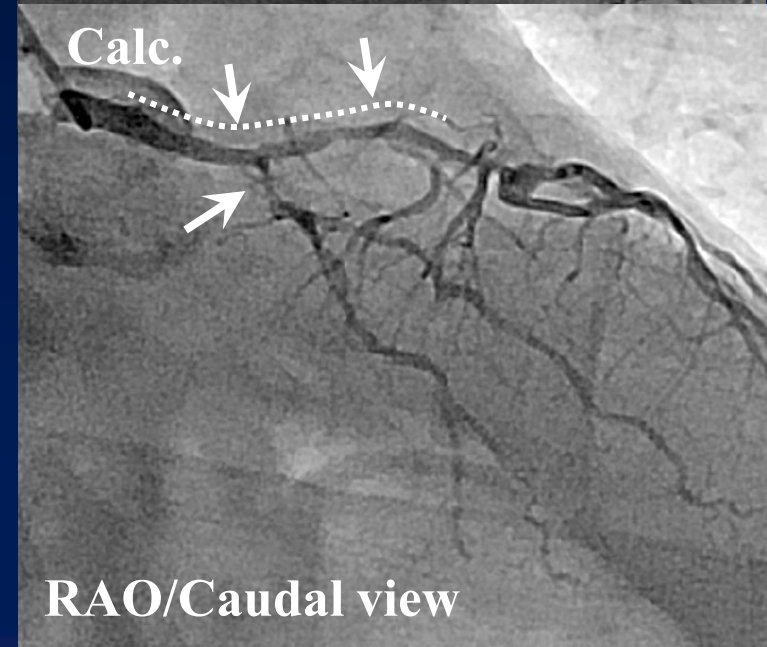
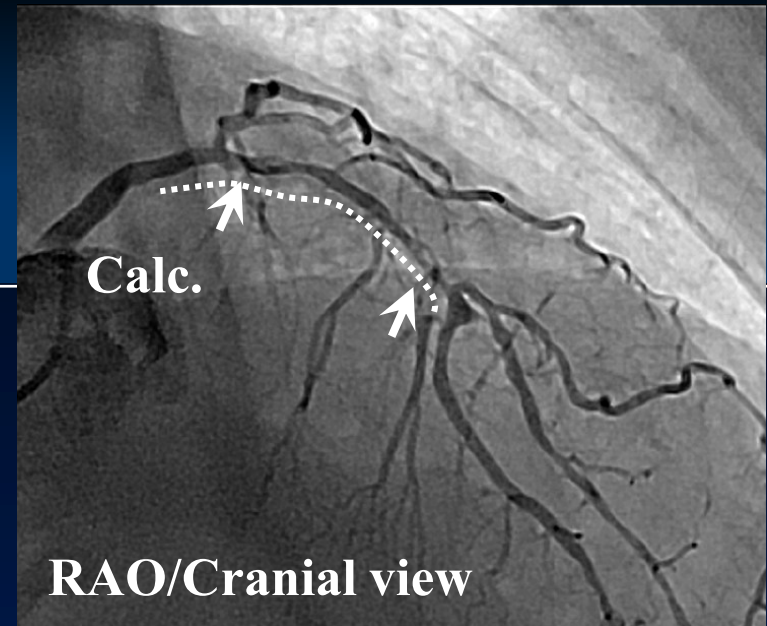
**Final CAG findings:** Jul. 2021

CAG: LMT- LAD diffuse 75-90%,  
ost. LCX 90%, OM 90%,  
dis. LAD 75%, diagonal 75%,  
AV & PD & PL branch 90% → 0% (PCI)

**LV EF (UCG):** 58%

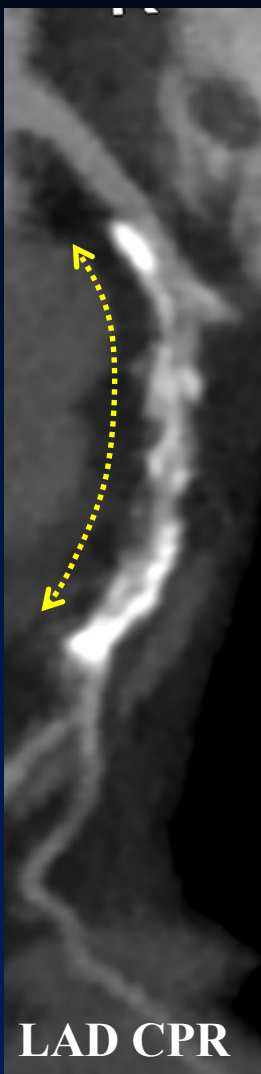
**MRI:** Anterior, Antero-septal, Infero-lateral  
:Myocardial ischemia (+)

Infero-lateral: LGE (+) 25-50%

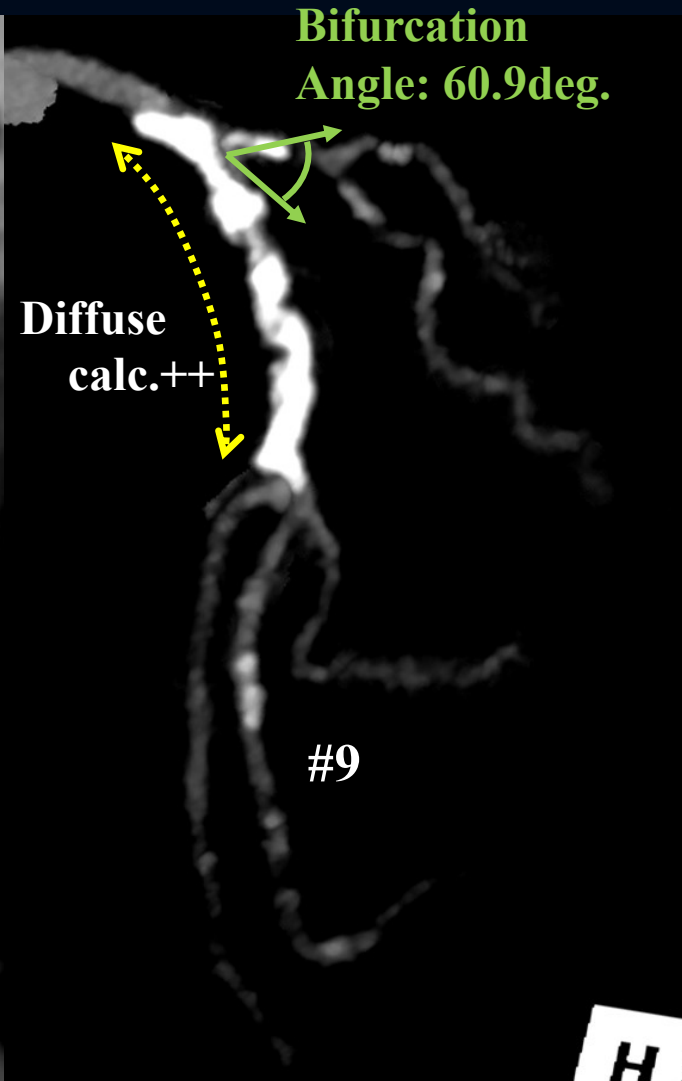




# Case-2 CT



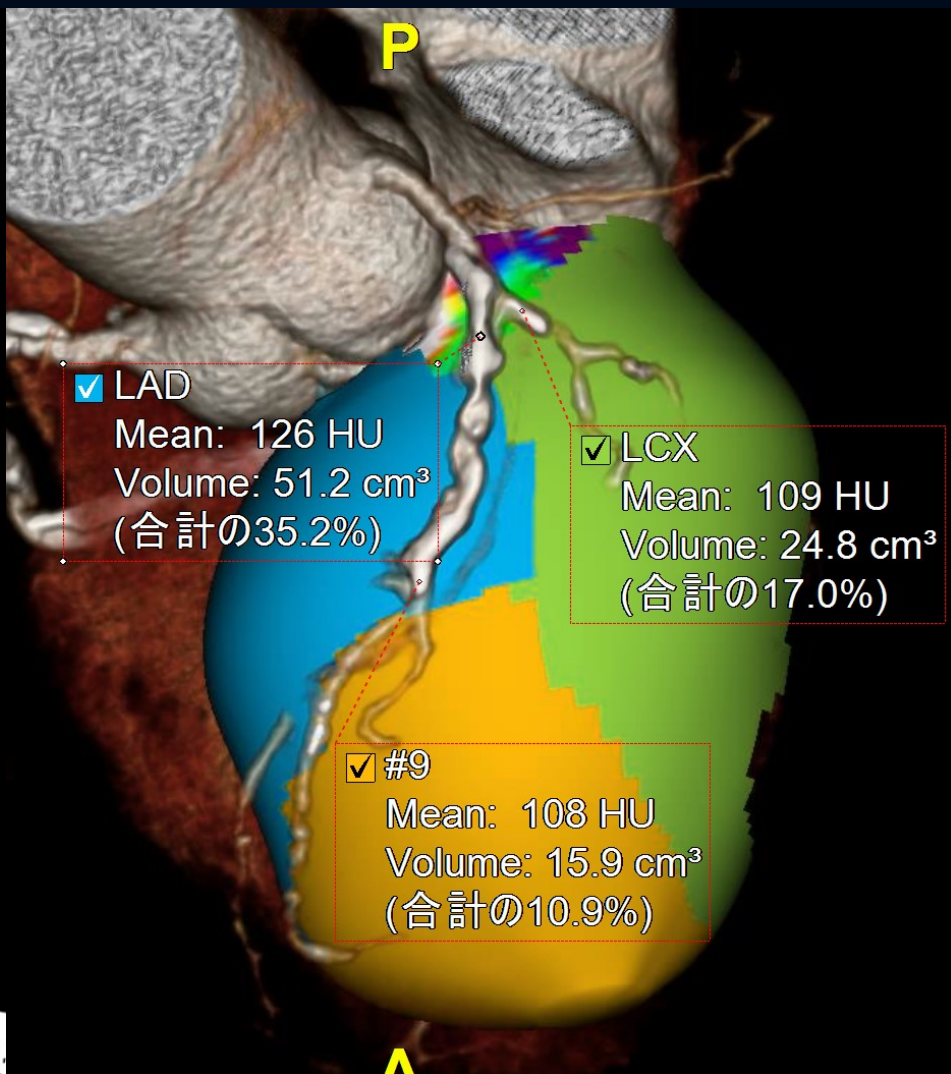
LAD CPR



Bifurcation Angle: 60.9deg.

Diffuse calc.++

#9



✓ LAD  
Mean: 126 HU  
Volume: 51.2 cm<sup>3</sup>  
(合計の35.2%)

✓ LCX  
Mean: 109 HU  
Volume: 24.8 cm<sup>3</sup>  
(合計の17.0%)

✓ #9  
Mean: 108 HU  
Volume: 15.9 cm<sup>3</sup>  
(合計の10.9%)

P

A

## **Case-3** 70's male

### **Target Lesion: LMT Trifurcation**

**Diagnosis:** AP

**Prior intervention:**

none

**Coronary risk factor:**

DM, Dyslipidemia, Family history

**eGFR:** 51.5

**SYNTAX Score:** 17

**Final CAG findings:** Aug. 2021

**CAG:** LMT-prox. LAD 75%,

ost. LCX 75%

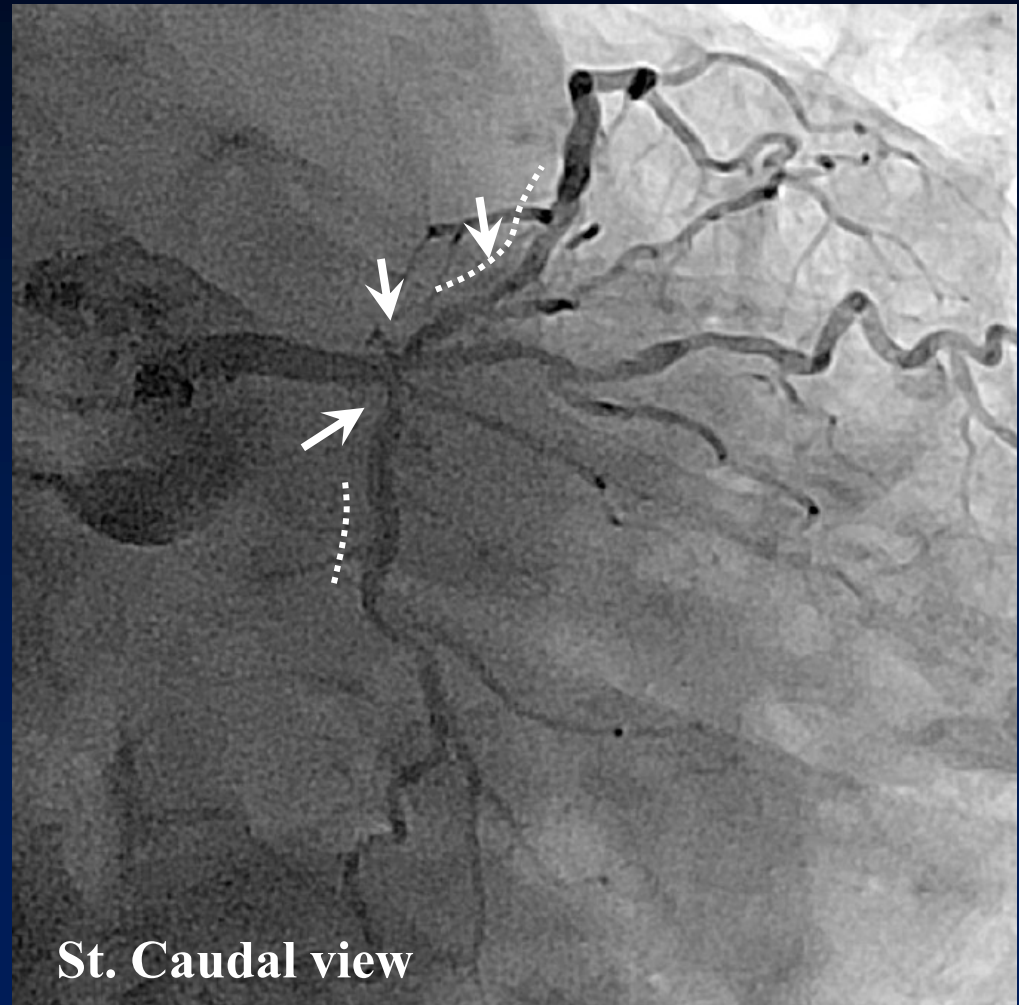
HL 75%, dis. LCX 75%

**FFR:** LAD : 0.70 (iFR: 0.56)

LCX : 0.86 (iFR: 0.94)

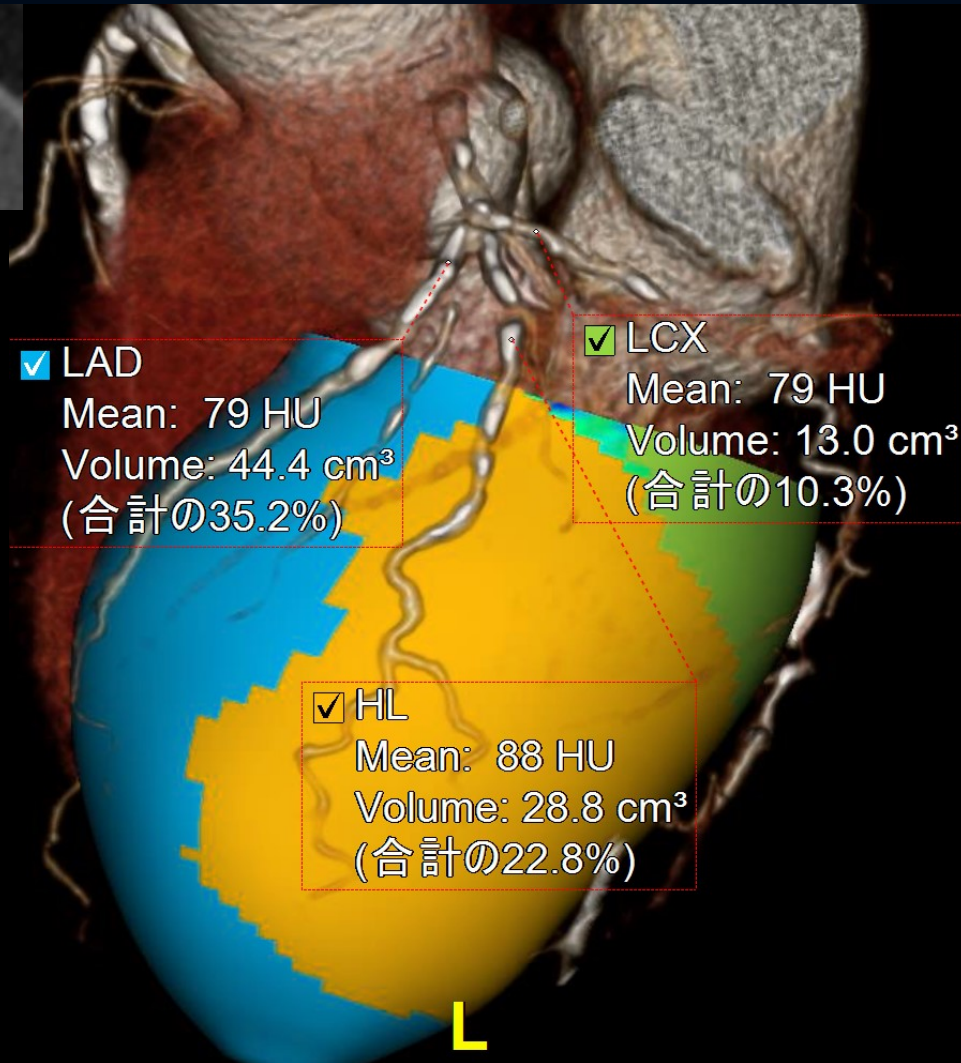
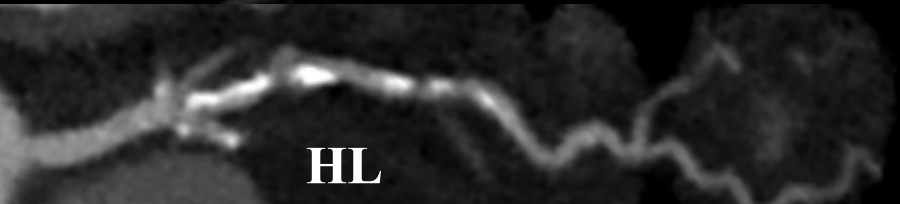
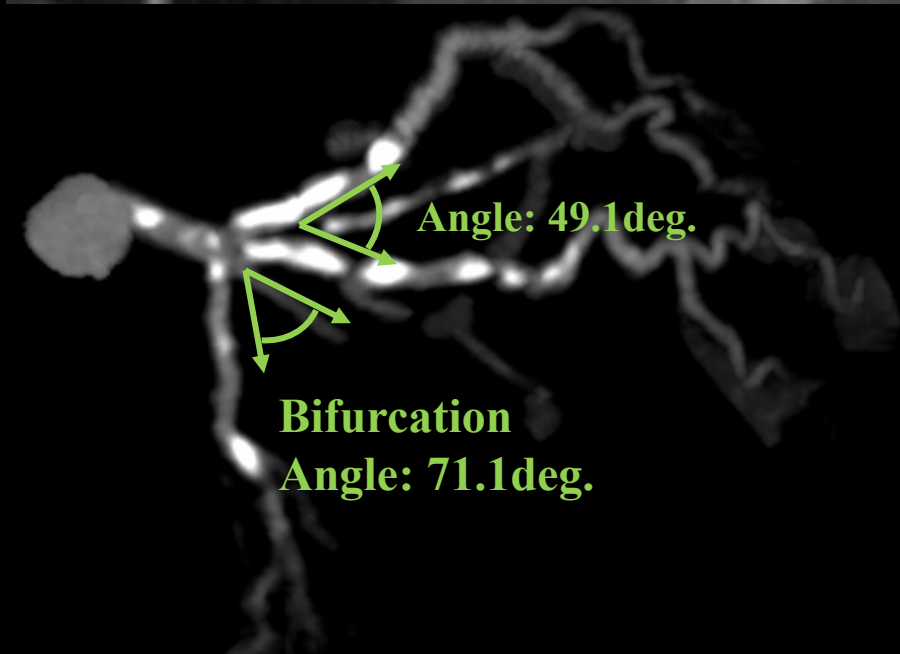
HL : 0.78 (iFR: 0.68)

**LV EF (UCG):** 68.8%





# Case-3 CT



## **Case-4** 70's male

### **Target Lesion: LAD Bifurcation**

#### **Diagnosis:**

AP, post Ablation (PAF, PSVT)

#### **Prior intervention:**

Sep. 2021 Ablation (PAF, PSVT)

#### **Coronary risk factor:**

DM, HT

#### **eGFR:**

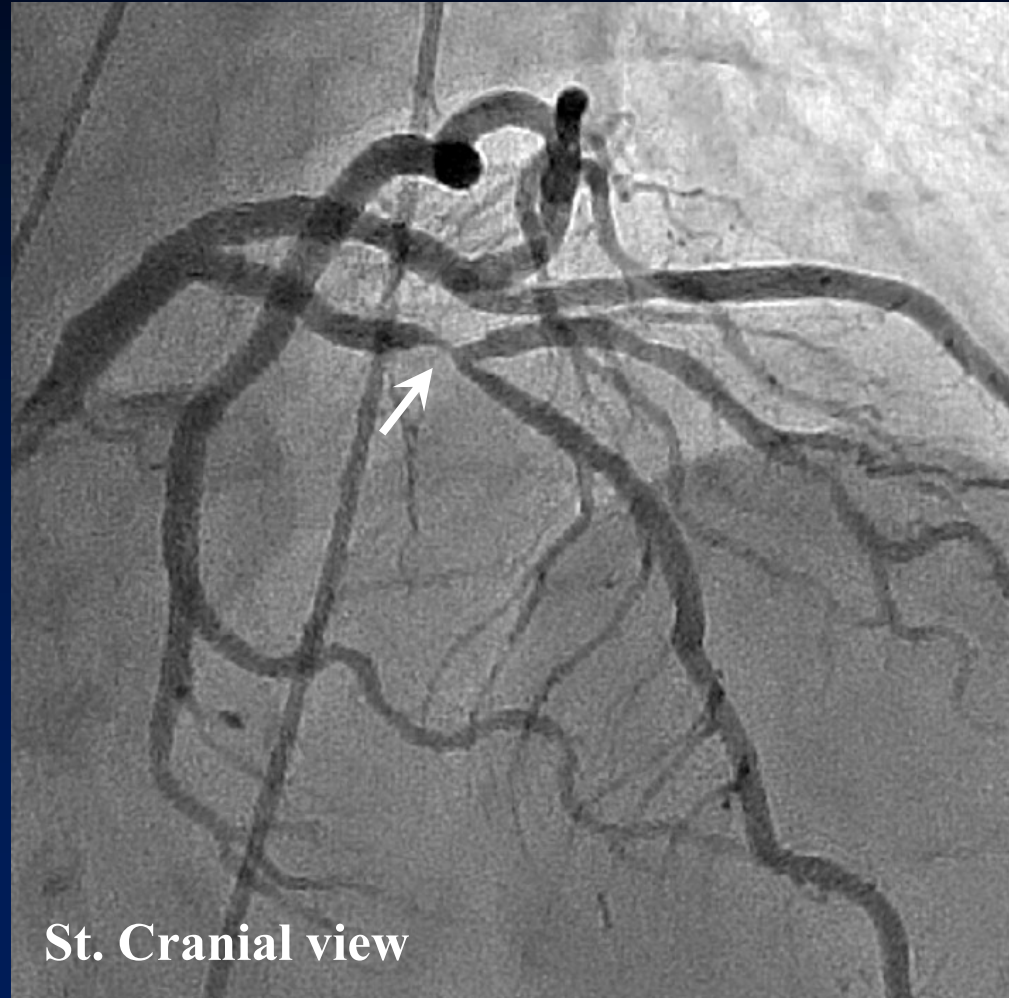
5.3 (CRF on HD)

#### **SYNTAX Score: 13**

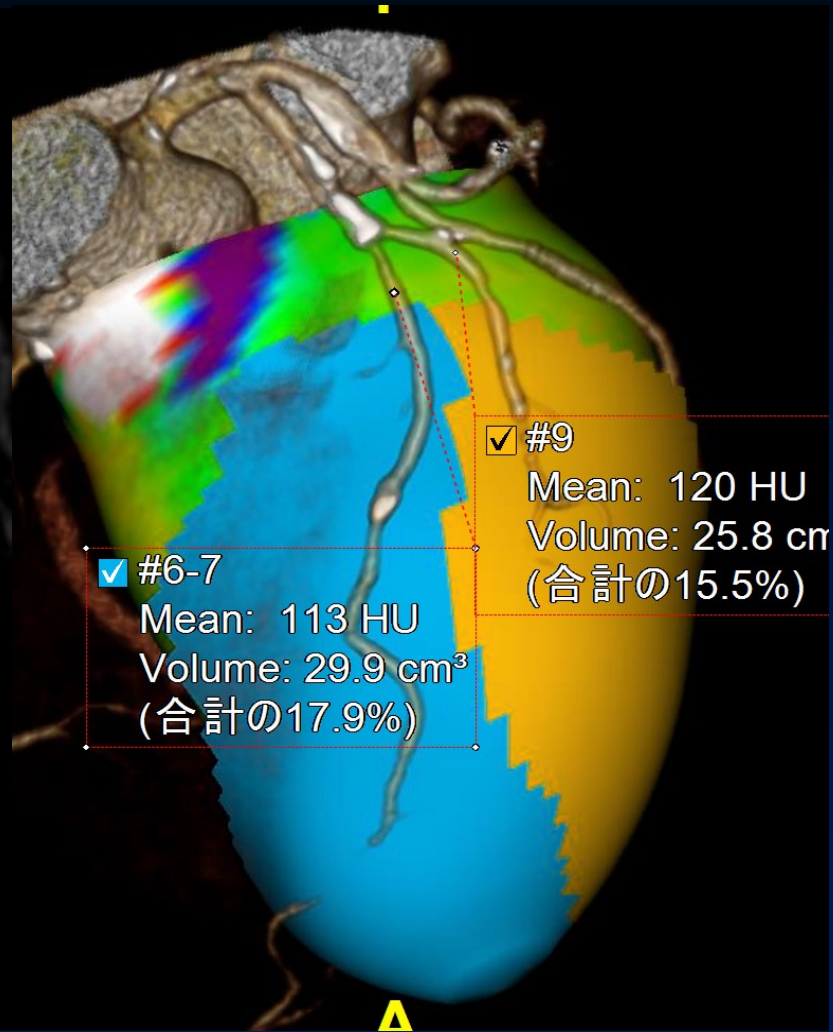
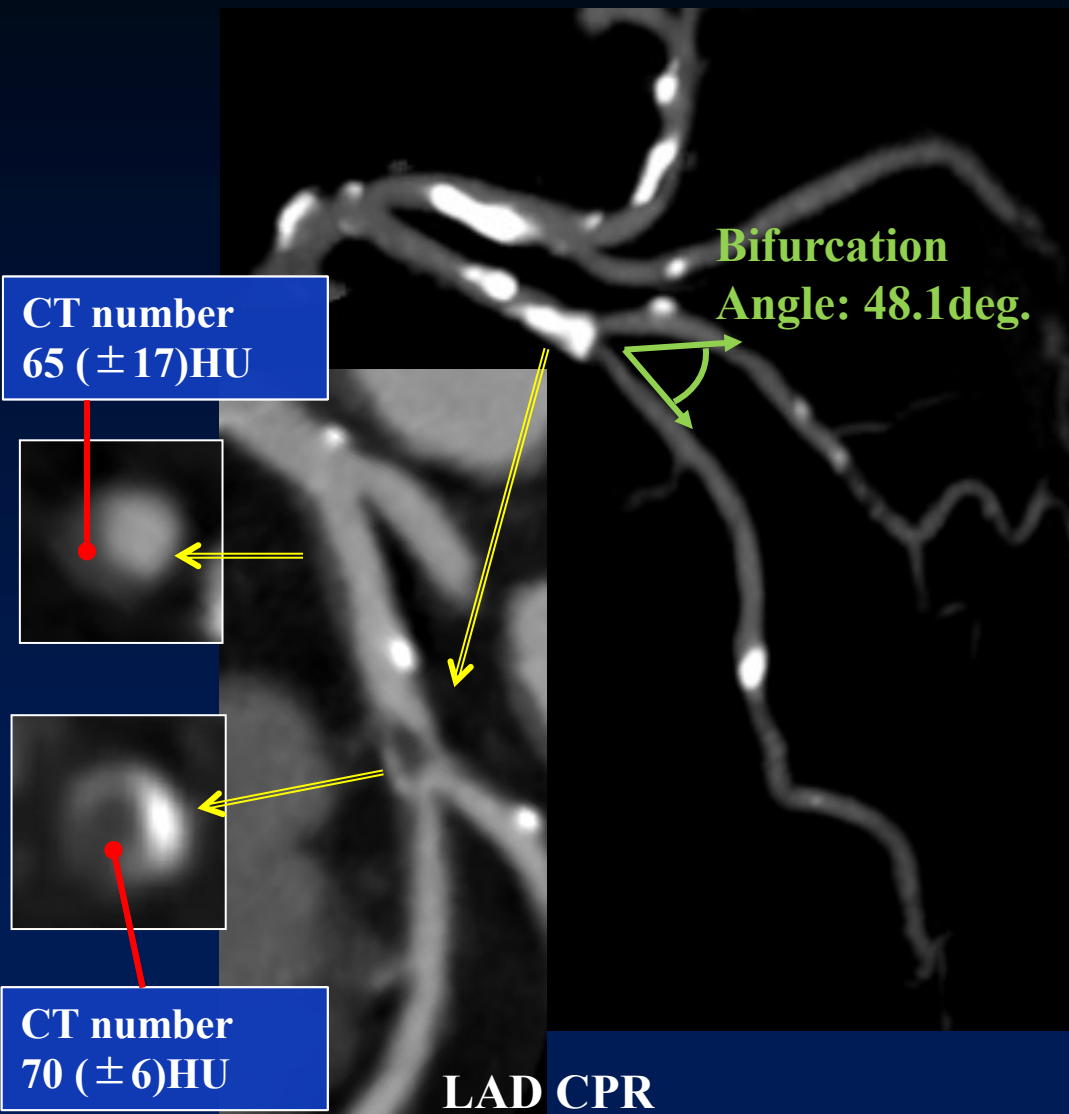
#### **Final CAG findings: Sep. 2021**

CAG: Prox. LAD 90%,  
OM 90%, prox. RCA 75%

#### **LV EF (UCG): 62.6%**



# Case-4 CT



## **Case-5** 80's female

### **Target Lesion: LAD Bifurcation**

**Diagnosis:** AP, CHF, mild AS, PAD

**Prior intervention:**

none

**Coronary risk factor:**

DM, Family history

**eGFR:** 7.3 (CRF on HD)

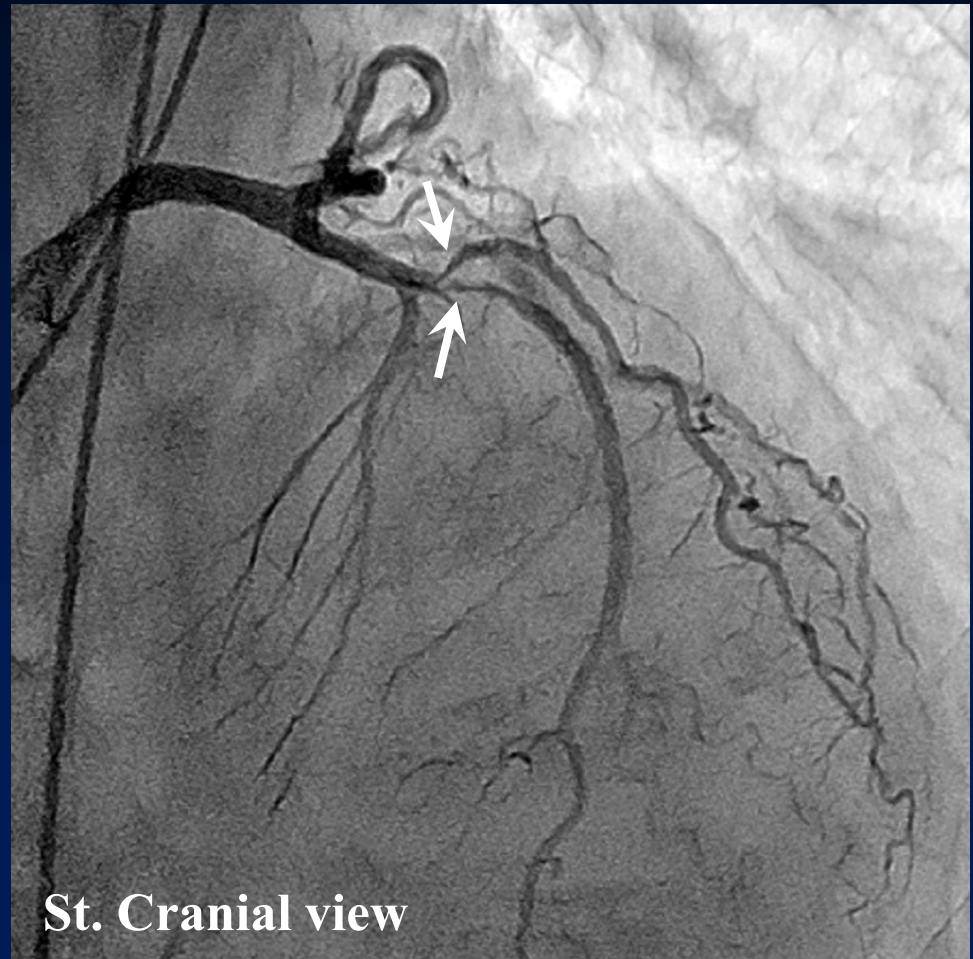
**SYNTAX Score:** 10

**Final CAG findings:** Sep. 2021

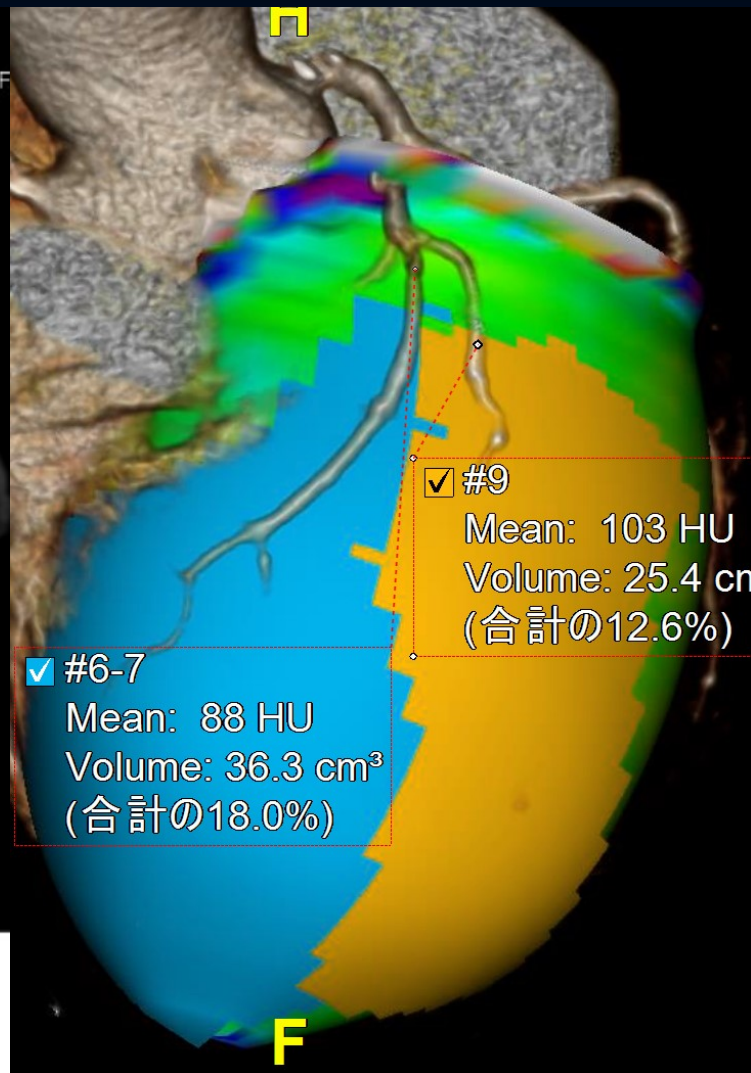
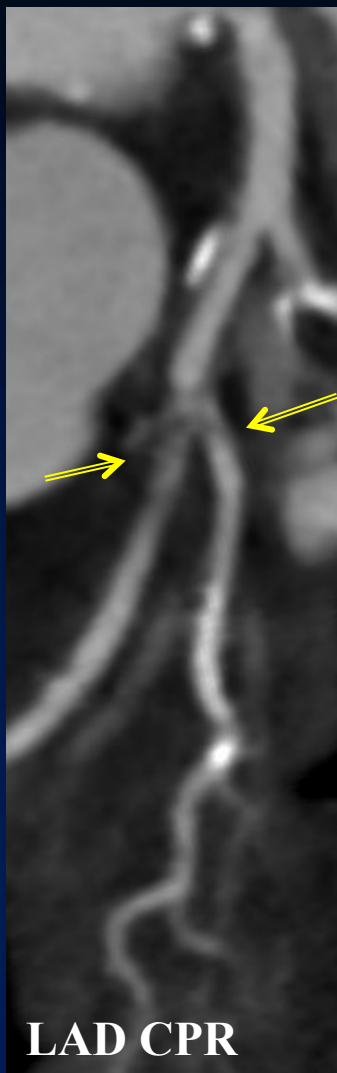
**CAG:** Prox. LAD 75%,  
diagonal 90%

**FFR:** LAD : 0.78 (iFR: 0.71)

**LV EF (UCG):** 48%



# Case-5 CT



## **Case-6** 60's male

### **Target Lesion: LAD Bifurcation**

**Diagnosis:** AP

**Prior intervention:**  
none

**Coronary risk factor:**  
HT

**eGFR:** 58.4

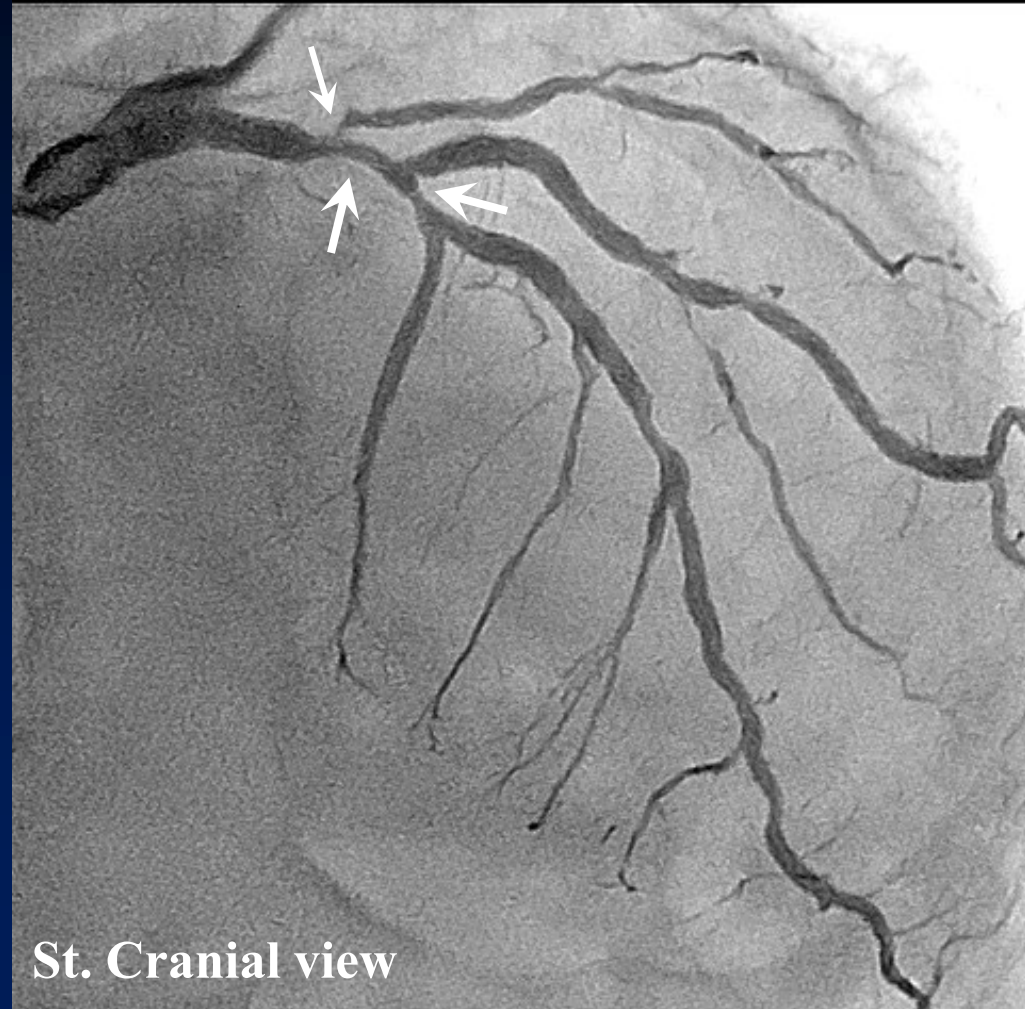
**SYNTAX Score:** 18

**Final CAG findings:** Sep. 2021

**CAG:** Prox. LAD 75%,  
diagonal 90%

**FFR:** LAD : 0.55 (iFR: 0.65)

**LV EF (UCG):** 45.2%



# Case-6 CT

LAD CPR

#9

#10

Bifurcation  
Angle: 32.1deg.

38.1deg

✓ #6-7

Mean: 75 HU  
Volume: 34.4 cm<sup>3</sup>  
(合計の15.7%)

✓ #9

Mean: 67 HU  
Volume: 22.3 cm<sup>3</sup>  
(合計の10.2%)

✓ #10

Mean: 68 HU  
Volume: 19.8 cm<sup>3</sup>  
(合計の9.05%)

✓ #10-2

Mean: 54 HU  
Volume: 6.36 cm<sup>3</sup>  
(合計の2.91%)